

# CONSTRUCTION IS GROWING



## Go Construct

Industry led, funded by the CITB levy

Go Construct is an initiative that aims to attract and retain a talented workforce for the construction and built environment sector



Construction employs

**2,730,000**

people



Research shows construction will grow

**2.5%** every year

for next 5 years



**232,000**

new construction jobs to be created in the UK by 2020 driven by investment in infrastructure and growth in private housing



**120,000**

new apprentices needed by 2018

## Occupations most in need of qualified workers in the next 5 years



**47,000**

Non-construction professional, technical, IT & other office-based staff



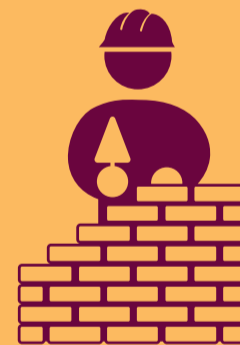
**21,600**

Wood trades and interior fit-out



**15,450**

Labourers



**14,350**

Bricklayers



**12,550**

Building envelope specialists



**11,150**

Painters and decorators



**10,150**

Electrical trades and installation



**9,250**

Senior, executive, and business process managers



**8,650**

Other construction professionals and technical staff



**7,900**

Construction trades supervisors

Construction is a career like no other

Find out about careers in construction

[goconstruct.org](http://goconstruct.org)



Figures from Construction Skills Network Forecasts 2016-2020